



PRODUCT BRIEF

Pigeon Point ShMM-700R Starter Kit Shelf Management Starter Kit

For AdvancedTCA and Custom Derivative Architectures

May 2, 2016

Electronics Protection
Pentair Technical Solutions
hardware.management@pentair.com

www.pigeonpoint.com
www.pentairprotect.com



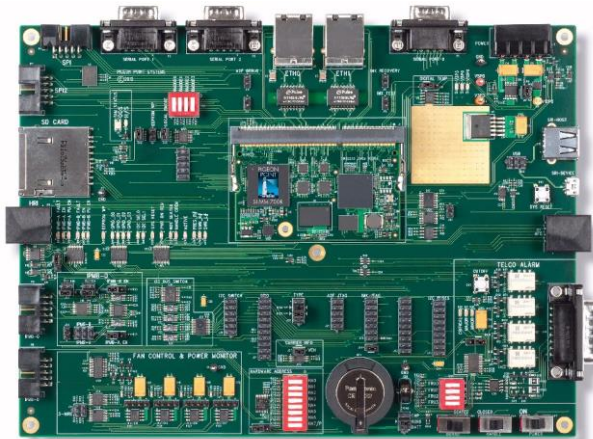
All Pentair brands and logos are the property of Pentair or its affiliated companies worldwide. Pentair reserves the right to change information without prior notification.

This Pigeon Point Shelf Management Starter Kit provides everything you need to quickly and cost-effectively develop compliant and interoperable Shelf Management Controllers for AdvancedTCA or custom shelves. The kit includes:

- Schematics for a ShMM-700R carrier board, ready for adaptation to the needs of your shelf.
- Bench top hardware, including a Shelf Manager and IPM Controller (IPMC), allowing your ramp up on AdvancedTCA style management to start immediately.
- One-stop support for hardware, firmware and software used in developing and delivering your Pigeon Point ShMM-700R based AdvancedTCA Shelf Manager.

(The term “shelf,” as used in AdvancedTCA and some industries, is essentially equivalent to the widely used term “chassis.”)

Please see the separate *Pigeon Point ShMM-700R and Shelf Manager Product Brief* for more details on the core components in this Starter Kit that are summarized below.



Bench top Shelf Manager

- Pigeon Point ShMM-700R Shelf Management Mezzanine with Pigeon Point Shelf Manager
- BTC-700R Bench Top Carrier provides a socket for the ShMM-700R and on-carrier resources similar to an actual in-shelf ShMM-700R carrier
- BTC-700R can be cabled together with the included bench top IPMC to form a two-node bench top IPMI network

Software, schematics & documentation delivered via secure website

- An overall partner page lists the individual product pages for the Pigeon Point products licensed by your company, accessed via company-specific credentials
- Product pages enable instant access to any updated materials that become available for a given product; an example Shelf Manager Release Page is shown on the next page of this brief.
- Pigeon Point ShMM-700R supports reliable, remote firmware upgrade over an Ethernet connection for all ShMM-700R-resident firmware
- *Pigeon Point ShMM-700R and Shelf Manager Product Brief* provides more details on ShMM-700R firmware upgrade facilities



World-Class Management Components
FOCUSED. DEPENDABLE. PROVEN.

PARTNER PAGE

Pigeon Point Shelf Manager Release Page

Export Control Classification Number

[export.README](#)

Additional Export Information

Upgrade Images and Instructions

[ShMM-700R Images](#)

Upgrade instructions for ShMM-700R

Documentation

[ShelfManagerREL.pdf](#)

[ShelfManagerUG.pdf](#)

[ShelfManagerEIR.pdf](#)

Pigeon Point Shelf Manager Release Notes
Pigeon Point Shelf Manager User Guide
Pigeon Point Shelf Manager External Interface Reference

Utilities

[SDR/FRU Compilers](#)

[RMCPTA Utility](#)

[HPDL Compiler](#)

Python based FRU/SDR compilers
RMCPTA – RMCP Test Agent
HPDL - Compiler

IntegralHPI

[IntegralHPI](#)

IntegralHPI

PPMM-700R carrier reference design schematics and bill of materials¹

- PPMM-700R carrier reference design schematics provided in PDF form
- In addition to supporting a bused IPMB-0 topology the PPMM-700R carrier reference design also includes the needed hardware

¹ The ShMM-700R is based on a hardware platform called the Pigeon Point Management Mezzanine 700R (PPMM-700R). That platform can also be configured for VITA's VPX, where Pentair offers a complementary Pigeon Point Chassis Manager, running on the ChMM-700R. Separate product briefs cover that product.

design materials for customers to implement a radial IPMB-0 topology, using one or more Microsemi SmartFusion FPGA(s) on the PPMM-700R carrier.

- Bill of materials includes materials for both the core carrier reference design and additional parts used on the bench top reference implementation

- Key features for Shelf Manager application include:
 - Based on Linux 2.6.34 kernel port
 - Specific support for Freescale i.MX287 processor and its peripherals, as well as the auxiliary Microsemi SmartFusion FPGA



World-Class Management Components
FOCUSED. DEPENDABLE. PROVEN.

PARTNER PAGE

BTC-700R Resource Page

Carrier Design Materials

ppmm700r-btc-ts-2_0_0.pdf	BTC-700R Technical Specification
ppmm-700r-carrier-rd-hwdesign-3_2.zip	PPMM-700R Carrier hardware reference design files, includes schematics (pdf and OrCAD design database) and Bill Of Materials.

Radial IPMB SmartFusion FPGA Images

Release Notes	
radial_ipmb_fpga_rn_1_3-1_0_1_0.pdf	Radial IPMB FPGA Image Release Notes

Radial IPMB SmartFusion FPGA Images	
radial_ipmb_fpga-1_3-1_0_1_0.dat	SmartFusion FPGA data file
radial_ipmb_fpga-1_3-1_0_1_0.pdb	SmartFusion FPGA Program Database File

Technical specifications

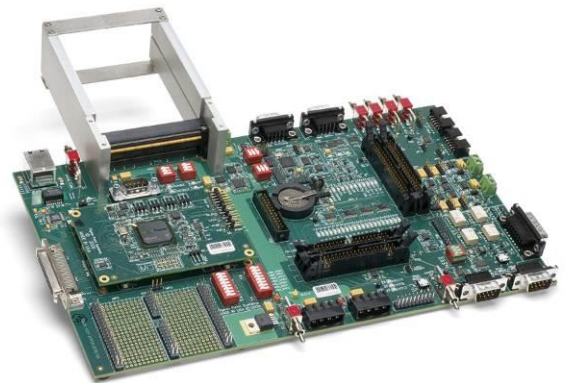
- Pigeon Point Management Mezzanine (PPMM-700R) Hardware Architecture Technical Specification
- Pigeon Point Management Mezzanine (PPMM-700R) Bench Top Carrier Technical Specification

Pigeon Point Linux for ShMM-700R

- Special Pigeon Point distribution optimized for cross development of ShMM-hosted applications, especially the Shelf Manager

Bench top IPMC

One board supplied; can be cabled together with the bench top Pigeon Point Shelf Manager (see above) to form a two-node bench top IPMI management network.



Ordering Information:

ShMM-700R-ATCA-SK Part #: 21991-130	Shelf Management Starter Kit for AdvancedTCA
BTC-700R-ATCA Part #: 21991-156	Bench top carrier for ShMM module