



World-Class Management Components
FOCUSED. DEPENDABLE. PROVEN.

PRODUCT BRIEF

Pigeon Point™ ShMM-500R Starter Kit Shelf Management Starter Kit for AdvancedTCA Shelves

This Pigeon Point Shelf Management Starter Kit provides everything you need to quickly and cost-effectively develop compliant and interoperable Shelf Management Controllers for AdvancedTCA. The kit includes:

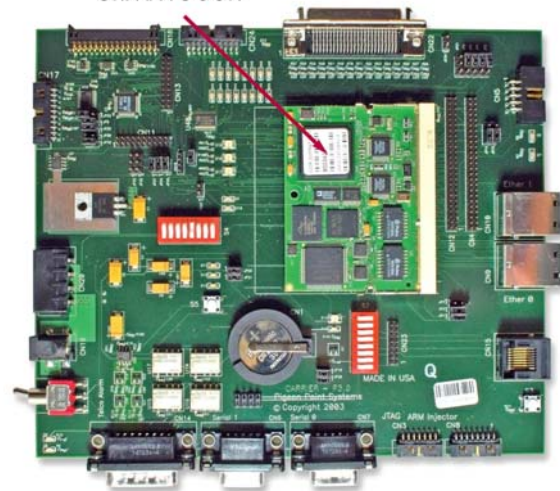
- Schematics for a ShMM carrier board, ready for adaptation to the needs of your shelf.
- Bench top hardware, including a Shelf Manager and IPM Controller, allowing your ramp up on AdvancedTCA management to start immediately.
- One-stop support for hardware, firmware and software used in developing and delivering your Pigeon Point ShMM-500R based AdvancedTCA Shelf Manager.

Please see the separate *Pigeon Point ShMM-500R and Shelf Manager Product Brief* for more details on the core components in this Starter Kit that are summarized below.

Bench top Shelf Manager

- Pigeon Point ShMM-500R Shelf Management Mezzanine with Pigeon Point Shelf Manager
- BTC-100R Bench Top Carrier provides a socket for the ShMM-500R and on-carrier resources similar to an actual in-shelf ShMM-500R carrier
- BTC-100R can be cabled together with the included bench top IPM Controller to form a two-node bench top ATCA IPMI network
- BTC-100R Bench Top Carrier works with RoHS-compliant ShMM-500R as well as non-RoHS-compliant ShMM-500 (shown in the photo). The first generation ShMM-300R (as well as its ShMM-300 non-RoHS compliant predecessor) works in the BTC-100R as well.

ShMM-500R



Software, schematics & documentation delivered via secure website

- Provides specific materials for your company
- Allows instant access to any updated materials that become available
- Pigeon Point ShMM-500R supports reliable, remote firmware upgrade over Ethernet connection for all ShMM-500R-resident firmware
- *Pigeon Point ShMM-500R and Shelf Manager Product Brief* provides more details on ShMM-500R firmware upgrade facilities
- Documentation and software apply equally to ShMM-500R and non-RoHS ShMM-500

BTC-100R schematics and bill of materials

- Schematics provided in PDF form
- Bill of materials includes materials for both the core carrier reference design and additional parts used on the bench top reference implementation



Pigeon Point Shelf Manager Release Page

Upgrade Images and Instructions

ShMM-500 Images Upgrade instructions for ShMM-500

Documentation

| | |
|---------------------|---|
| ShelfManagerREL.pdf | Pigeon Point Shelf Manager Release Notes |
| ShelfManagerUG.pdf | Pigeon Point Shelf Manager User Guide |
| ShelfManagerEIR.pdf | Pigeon Point Shelf Manager External Interface Reference |

Utilities

| | |
|--------------------|--------------------------------|
| SDR/FRU Compilers | Python based FRU/SDR compilers |
| RMCPATA Utility | RMCPATA – RMCP Test Agent |
| PPS-SENTRY-MIB.txt | Pigeon Point SNMP MIB |

Source Customer Instructions

Shelf Manager Build Instructions Build Instructions

Monterey Linux RPMs and Documentation

ShMM-500: mips-rpms.tgz user_guide release_notes

Technical specifications

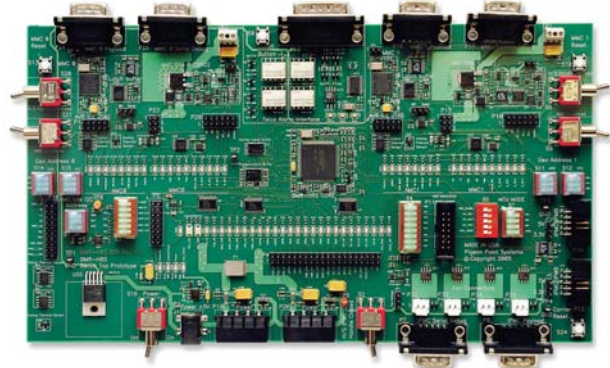
- *Pigeon Point ShMM-500 Shelf Management Mezzanine Hardware Architecture Technical Specification*
- *Pigeon Point Shelf Management Mezzanine BTC-100R Bench Top Carrier Technical Specification*
- *Pigeon Point ShMM-500 Shelf Management Mezzanine Firmware and Operating System Layer Technical Specification*
- *Pigeon Point Shelf Management Mezzanine Intelligent Platform Management Foundation Technical Specification*
- *Pigeon Point Shelf Management Mezzanine Shelf Manager Software Architecture Technical Specification*

Monterey Linux for ShMM-500

- Au1550 Edition of Monterey Linux; key features for Shelf Manager application include:
 - Based on Linux 2.4.x kernel port
 - Special support for the AMD Au1550 processor and peripherals
- Visit www.pigeonpoint.com/library.html#userdocs for the Monterey Linux User Guide (Au1550 Edition)

Bench top IPM Controller

One board supplied; can be cabled together with the bench top Pigeon Point Shelf Manager (see above) to form a two-node bench top ATCA IPMI management network



Ordering information

| | |
|-------------------|--|
| ShMM-500R-ATCA-SK | Shelf Management Starter Kit for AdvancedTCA |
| BTC-100R | Bench top carrier for ShMM module |



For more information, visit our website at <http://www.pigeonpoint.com>

Pigeon Point Systems • P.O. Box 66989 • Scotts Valley CA 95067 • 831.438.1565