

PRODUCT BRIEF

Pigeon Point ChMM-700R Starter Kit

Chassis Management Starter Kit

For VPX and ANSI/VITA 46.11-2015 Chassis

May 2, 2016

Electronics Protection
Pentair Technical Solutions
hardware.management@pentair.com

www.pigeonpoint.com
www.pentairprotect.com



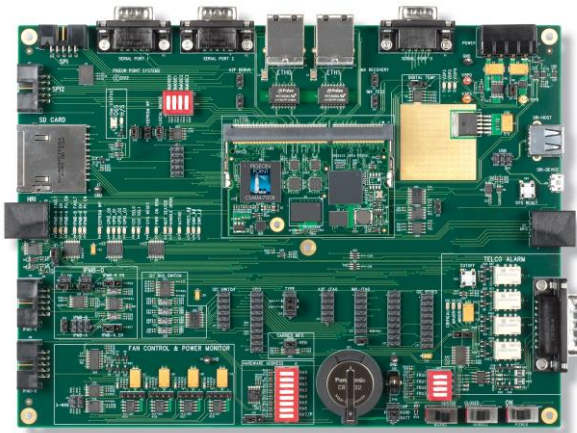
All Pentair brands and logos are the property of Pentair or its affiliated companies worldwide. Pentair reserves the right to change information without prior notification.

This Pigeon Point Chassis Management Starter Kit provides everything you need to quickly and cost-effectively develop compliant and interoperable Chassis Management Controllers for ANSI/VITA 46.11.

The kit includes:

- Schematics for a ChMM-700R carrier board, ready for adaptation to the needs of your chassis.
- Bench top hardware, including a Chassis Manager and Intelligent Platform Management Controller (IPMC), allowing your ramp up on VITA 46.11 management to start immediately.
- One-stop support for hardware, firmware and software used in developing and delivering your Pigeon Point ChMM-700R based VITA 46.11 Chassis Manager.

Please see the separate *Pigeon Point ChMM-700R and Chassis Manager Product Brief* for more details on the core components in this Starter Kit that are summarized below.



Bench top Chassis Manager

- Pigeon Point ChMM-700R Chassis Management Mezzanine with Pigeon Point Chassis Manager
- BTC-700R Bench Top Carrier provides a socket for the ChMM-700R and on-carrier resources similar to an actual in-chassis ChMM-700R carrier
- BTC-700R can be cabled together with the included bench top IPM Controller to form a two-node bench top VITA 46.11 IPMI network

Software, schematics & documentation delivered via secure website

- Overall partner page lists the individual product pages for the Pigeon Point products licensed by your company, accessed via company-specific credentials
- Product pages enable instant access to any updated materials that become available for a given product, an example Chassis Manager Release Page is shown below
- Pigeon Point ChMM-700R supports reliable, remote firmware upgrade over an Ethernet connection for all ChMM-700R-resident firmware
- Pigeon Point ChMM-700R and Chassis Manager Product Brief provides more details on ChMM-700R firmware upgrade facilities



PARTNER PAGE

Pigeon Point Chassis Manager Release Page

Export Control Classification Number export.README	Additional Export Information
Upgrade Images and Instructions ChMM-700R Images	Upgrade instructions for ChMM-700R
Documentation ChassisManagerREL.pdf ChassisManagerUG.pdf ChassisManagerEIR.pdf	Pigeon Point Chassis Manager Release Notes Pigeon Point Chassis Manager User Guide Pigeon Point Chassis Manager External Interface Reference
Utilities SDR/FRU Compilers RMCPTA Utility HPDL Compiler	Python based FRU/SDR compilers RMCPTA – RMCP Test Agent HPDL - Compiler

PPMM-700R carrier reference design schematics and bill of materials¹

- PPMM-700R carrier reference design schematics provided in PDF form
- In addition to supporting a bused System IPMB topology the PPMM-700R carrier reference design also includes the needed hardware design materials for customers to implement a radial System IPMB topology, using one or more Microsemi SmartFusion FPGA(s) on the PPMM-700R carrier.

¹ The ChMM-700R is based on a hardware platform called the Pigeon Point Management Mezzanine 700R (PPMM-700R). That platform can also be configured for PICMG's AdvancedTCA, where Pentair offers a complementary Pigeon Point Shelf Manager, running on the ShMM-700R. Separate product briefs cover that product.

- Bill of materials includes materials for both the core carrier reference design and additional parts used on the bench top reference implementation



World-Class Management Components
FOCUSED. DEPENDABLE. PROVEN.

PARTNER PAGE

BTC-700R Resource Page

Carrier Design Materials

ppmm700r-btc-ts-2_0_0.pdf	BTC-700R Technical Specification
ppmm-700r-carrier-rd-hwdesign-3_2.zip	PPMM-700R Carrier hardware reference design files, includes schematics (pdf and OrCAD design database) and Bill Of Materials.

Radial IPMB SmartFusion FPGA Images

Release Notes

radial_ipmb_fpga_rn_1_3-1_0_1_0_0.pdf	Radial IPMB FPGA Image Release Notes
---	--------------------------------------

Radial IPMB SmartFusion FPGA Images

radial_ipmb_fpga-1_3-1_0_1_0_0.dat	SmartFusion FPGA data file
radial_ipmb_fpga-1_3-1_0_1_0_0.pdb	SmartFusion FPGA Program Database File

Technical specifications

- Pigeon Point Management Mezzanine (PPMM-700R) Hardware Architecture Technical Specification
- Pigeon Point Management Mezzanine (PPMM-700R) Bench Top Carrier Technical Specification

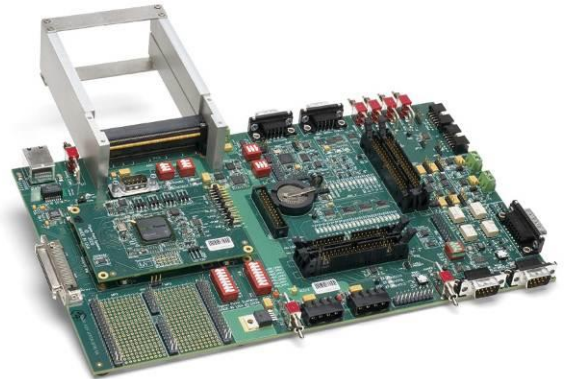
Pigeon Point Linux for ChMM -700R

- Special Pigeon Point distribution optimized for cross development of ChMM-hosted applications, especially the Chassis Manager
- Key features for Chassis Manager application include:
 - Based on Linux 2.6.34 kernel port
 - Specific support for Freescale i.MX287 processor and its peripherals, as well

as the auxiliary Microsemi SmartFusion FPGA

Bench top IPMC

One board supplied; can be cabled together with the bench top Pigeon Point Chassis Manager (see above) to form a two-node bench top VITA 46.11 IPMI management network.



Ordering Information:

ChMM-700R-VPX-SK	Chassis Management Starter Kit for VITA 46.11
Part #: 21991-140	
BTC-700R-VPX	Bench top carrier for ChMM module
Part #: 21991-157	