

Pigeon Point® BMR-H8S-AMCc-SKA Starter Kit Add-on Board Management Starter Kit Add-on for AdvancedMC™ Carrier IPM Controllers

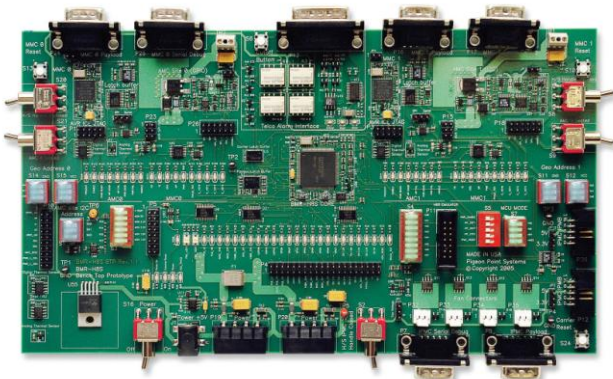
This Pigeon Point Board Management Starter Kit Add-on provides everything you need to quickly and cost-effectively develop compliant and interoperable Carrier IPM Controllers (IPMCs) for AdvancedMC (AMC) carriers. This kit is an add-on to the BMR-H8S-ATCA-SK Starter Kit for ATCA IPM Controllers. This kit includes:

- Augmented schematics covering Carrier IPMC hardware, ready for integration/adaptation into the design of your ATCA-based AMC carrier board.
- Corresponding Carrier IPMC firmware, delivered in source form—ready for simple and quick adaptation to the specific requirements of your product.
- Bench top Shelf Manager and Carrier IPMC hardware (from the separately purchased BMR-H8S-ATCA Starter Kit) allows you to ramp up on IPMI-based management without waiting for your custom hardware.
- One-stop support for hardware, firmware and software used in developing and delivering your Pigeon Point BMR-based Carrier IPMC.

This reference design defines a Carrier IPMC for ATCA-based AMC carriers and is based on H8S/2168 family of controllers from Renesas Technology (which also includes the H8S/2167 and H8S/2166). Please see the separate *Pigeon Point BMR-H8S-AMCc Product Brief* for more details.

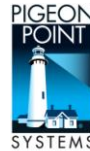
Bench Top Carrier IPMC with two MMCs

- Cables together with a bench top Pigeon Point Shelf Manager to form a four-node bench top ATCA/AMC IPMI management network



Software, Schematics and Documentation Delivered via Secure Website

- Provides specific materials for your company
- Allows instant access to any updated materials that become available



Pigeon Point BMR-H8S-AMCc (Carrier) Release Page

Documentation

- [bmr-h8s-amcc-rn.pdf](#) Release Notes
- [bmr-h8s-amcc-ug.pdf](#) Users Guide
- [bmr-h8s-amcc-ha-ts.pdf](#) Hardware Architecture
- [bmr-h8s-amcc-sa-ts.pdf](#) Software Architecture
- [bmr-h8s-amcc-atcater-report.tar.gz](#) Polaris Networks ATCA Tester results
- [bmr-h8s-amcc-amcater-report.tar.gz](#) Polaris Networks AMC Tester results

Hardware Design Materials (schematic, BOM, etc)

- [bmr-h8s-amcc-hwdesign.tgz](#) Hardware Design

Pre-Built Carrier Images

- [bmr-h8s-amcc-btp11-bin.tgz](#) Carrier Images
- [bmr-avr-amcm-h8sbtp11-bin.tgz](#) AMC Images

Source Code

- [bmr-h8s-amcc-firmware.tgz](#) Source tar image - .tgz format
- [bmr-h8s-amcc-firmware.zip](#) Source tar image - .zip format

Development Facilities

- [bmr-h8s-devsoft-linux.tgz](#) Linux only, .tgz format
- [bmr-h8s-devsoft-win.zip](#) Windows only, .zip format
- [SDR/FRU Compilers](#) SDR and FRU Compilers

Technical Specifications and User Guide

- Pigeon Point BMR-H8S-AMCc Hardware Architecture Technical Specification
- Pigeon Point BMR-H8S-AMCc Software Architecture Technical Specification
- Pigeon Point Board Management Starter Kit User Guide: BMR-H8S-AMCc Edition

BMR-H8S-AMCc Schematics and Bill of Materials

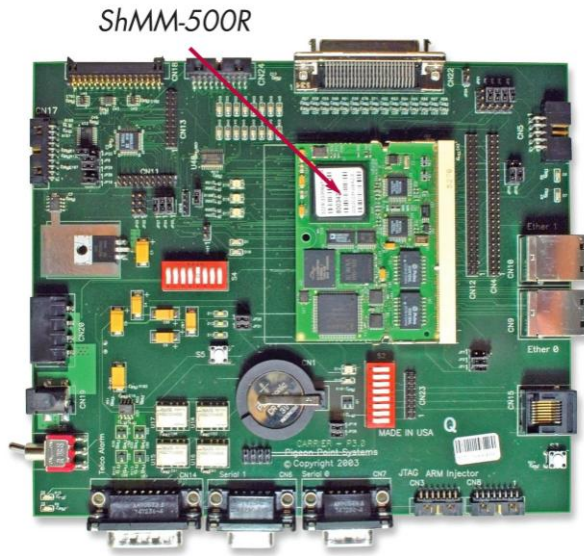
- Schematics provided in PDF form
- Bill of materials includes materials for both the core reference design and additional parts used on the bench top reference implementation

Readily adaptable firmware in source code form

- All mandatory and many optional IPMI/ATCA/AMC commands supported over IPMB-0 and IPMB-L
- Numerous PPS extension commands, primarily used over the payload and debug serial interfaces
- Simple—but highly flexible—configuration of firmware features

Bench top Shelf Manager

- Pigeon Point ShMM-500R Shelf Management Mezzanine with Pigeon Point Shelf Manager pre-installed in Flash (see separate product brief for details)
- BTC-100R Bench Top Carrier provides a socket for the ShMM-500 and on-carrier resources similar to an actual in-shelf ShMM-500R carrier
- BTC-100R can be cabled together with a bench top Carrier IPMC and two MMCs to form a four-node bench top ATCA/AMC IPMB-0 and IPMB-L network



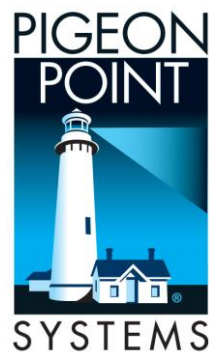
Monterey Linux for ShMM-500

- Au1550 Edition of Monterey Linux; key features for Shelf Manager application include:
 - Based on Linux 2.4.x kernel port
 - Special support for the AMD Au1550 processor and peripherals
- See www.pigeonpoint.com/Library.html#userdocs for a User Guide to the Au1550 Edition of Monterey Linux.

NOTE: No additional bench top hardware is needed or supplied with BMR-H8S-AMCc Starter Kit Add-on. This Starter Kit Add-on requires separate purchase of the BMR-H8S-ATCA Starter Kit, which includes a bench top Shelf Manager and a bench top H8S-based IPM Controller. That H8S bench top board already supports Carrier IPMC functionality and two AMC sites

Ordering Information

BMR-H8S-AMCc-SKA	Board Management Starter Kit Add-on for ATCA-based AMC carriers (requires separately purchased BMR-H8S-ATCA-SK Board Management Starter Kit)
BMR-H8S-ATCA-BTR	Bench top implementation of BMR-AVR-AMCm and BMR-H8S-AMCc reference designs (which also implements the BMR-H8S-ATCA reference design).



For more information, visit our website at <http://www.pigeonpoint.com>

Pigeon Point Systems • 2191 S. El Camino Real, Suite 209 • Oceanside CA 92054 • 760.757.2304